

LAMPIRAN A.3

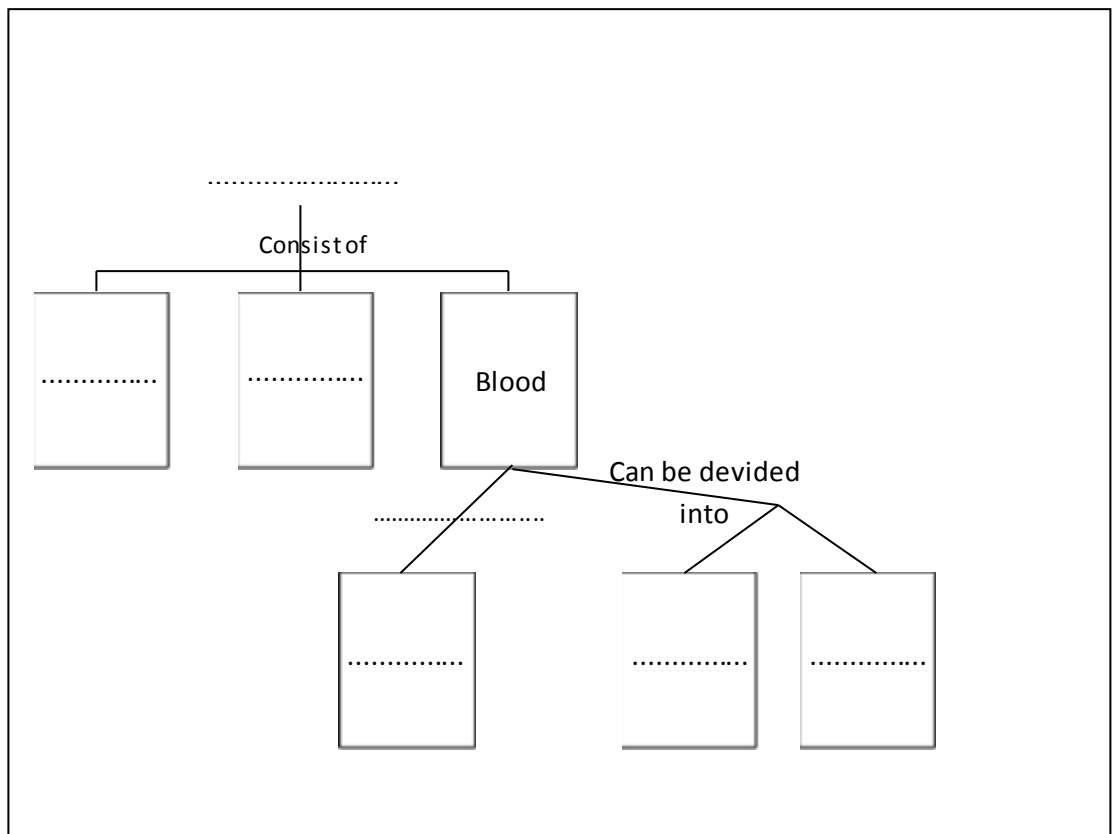
LKS SISTEM PEREDARAN DARAH MANUSIA KELAS KONTROL

Name :

Class :

Student Worksheet

- Read your textbook about circulatory system carefully. You can discuss it with your partner. Ask for things you don't understand to the teacher.
- After read the textbook, please make a chart in the white pasteboard that is given to you. The example of the chart is shown below:



Steps of making chart:

- Write down all the concepts on your other paper, the concepts, for examples might be like: heart, blood vessels, vein, blood, capillary, red blood cells, etc.
- Find the correlation among the cards, for example: blood consist of red blood cells, blood consist of white blood cells, blood consist of platelets, etc.
- Write down the concepts that you've been write on paper on the coloured paper that teacher has given to you.
- Arrange the coloured papers on the white pasteboard.
- Connect the coloured papers with line (draw the line by yourself)
- Write the phrase that connects the coloured papers, we can read on the example above, the connecting phrase might be like: consist of, way of working, etc.
- Stick the coloured papers on the white pasteboard with glue.

c. Answer the question below!

1. **Someone whose lack of faith in God decides to comitte suicide, he slashes his wrist with knife, and blood come out with a heavy flow. In your opinion, which vessel are cut? Give some reason.**

Answer:

2. From all chamber of heart, which one has the thickest wall? Give some reason.

Answer:

3. Desi who want to know her blood type checked her blood in the laboratory. Desi's blood turns to clot when it's spilled by agglutinin β /anti-B and does not clot when it's spilled by agglutinin α /anti-A. What is Desi's blood type? Give a brief reason.

Answer:

4. Toni had an accident and lost a lot of blood, so ot should be given a blood transfusion. When Toni's blood is tested in the laboratory, the blood clot when it's spilled by agglutinin α /anti-A, so, based on

the presence of aglutinogen and aglutinin in the blood, which blood type that can be donor for Toni? Give some reason.

Answer:

5. Why does fat deposit in the inner wall of artery can cause stroke? Give some explanation.

Answer:

6. Someone has died only because a slash wound in her fingertip. The sice of the wound is only about 1 cm, but the blood doesn't stop come out of the finger, so she died from blood loss. In your opinion, what cause the disease of this person? Mention the name of disease too.

Answer:

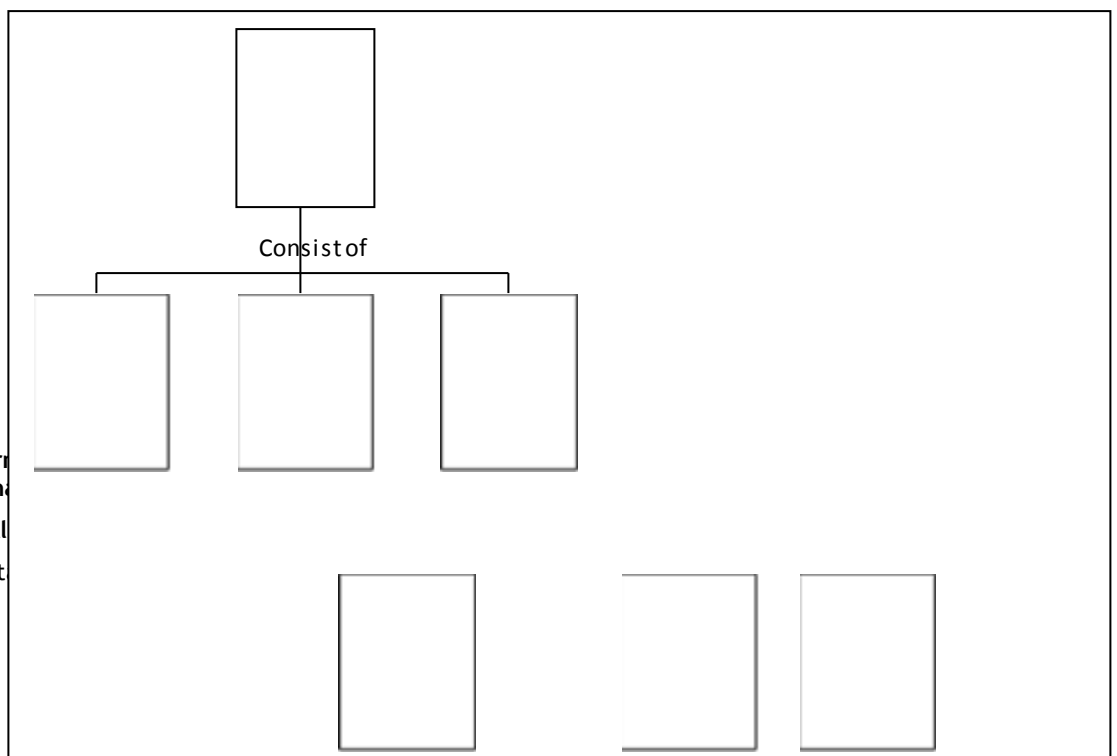
LKS SISTEM PEREDARAN DARAH MANUSIA KELAS EKSPERIMEN

Name :

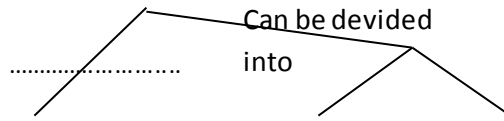
Class :

Student Worksheet

- a. Read the content of cards that are given to you carefully. You can discuss it with your partner. Ask for things you don't understand to the teacher.
- b. From all of those cards, please make a chart in the white pasteboard that is given to you. The example of the chart is shown below:



Nisa Perri
Pengguna
Bilingual
Universit



Steps of making chart:

- Find the correlation among the cards.
 - Arrange the cards on the white pasteboard.
 - Connect the card with line (draw the line by yourself)
 - Write the phrase that connects cards, we can read on the example above, the connecting phrase might be like: consist of, way of working, etc.
 - Stick the cards on the white pasteboard with glue.
- c. Answer the question below!

1. Someone whose lack of faith in God decides to comitte suicide, he slashes his wrist with knife, and blood come out with a heavy flow. In your opinion, which vessel are cut? Give some reason.

Answer:

-
-
2. From all chamber of heart, which one has the thickest wall? Give some reason.

Answer:

3. Desi who want to know her blood type checked her blood in the laboratory. Desi's blood turns to clot when it's spilled by agglutinin β /anti-B and does not clot when it's spilled by agglutinin α /anti-A. What is Desi's blood type? Give a brief reason.

Answer:

4. Toni had an accident and lost a lot of blood, so ot should be given a blood transfusion. When Toni's blood is tested in the laboratory, the blood clot when it's spilled by agglutinin α /anti-A, so, based on

the presence of agglutinogen and agglutinin in the blood, which blood type that can be donor for Toni? Give some reason.

Answer:

5. Why does fat deposit in the inner wall of artery can cause stroke? Give some explanation.

Answer:

6. Someone has died only because a slash wound in her fingertip. The size of the wound is only about 1 cm, but the blood doesn't stop come out of the finger, so she died from blood loss. In your opinion, what cause the disease of this person? Mention the name of disease too.

Answer:
